

FOR REFERENCE ONLY

Applicability: CESSNA
336
337

Drawing: AFC-W330
Revision: B
Date: 06/01/05

Airwolf Parts List No. AFC-W330

<u>Index</u>	<u>Part Number</u>	<u>Description</u>	<u>Quantity</u>
01.	W-3002	AirSep Assy	(1)
02.	W-2011	Bracket	(1)
03.	W-2150	Doubler	(1)
04.	AN526C-1032R10	Screw	(4)
05.	AN960-10	Flat Washer, #10	(4)
06.	MS20365-1032A	Locknut, #10	(4)
07.	W-2008	Air Syphon Pump	(1)
08.	W-2018-1	Air-Tee	(1)
09.	AN912-3D	Reducer Bushing	(1)
10.	MS20823-5D	Fitting, 45°	(1)
11.	MIL6000-1/4	Hose, 1/4" ID	(18")
12.	MIL6000-5/16	Hose, 5/16" ID	(18")
13.	MIL6000-5/8	Hose, 5/8" ID	(18")
14.	MIL6000-5/8	Hose, 5/8" ID	(3")
15.	MIL6000-3/4	Hose, 3/4" ID	(18")
16.	MM-4	Hose Clamp, 1/4"	(2)
17.	MM-5	Hose Clamp, 3/8"	(4)
18.	QS100M10H	Hose Clamp, 5/8"	(4)
19.	QS100M12H	Hose Clamp, 3/4"	(2)
20.	QS100M24H	Hose Clamp, 1-1/2"	(1)
21.	QS100M72H	Hose Clamp, 4-1/2"	(1)
22.	W-2100	"C" Channel	(10")
23.	MS21919WDG-05	Adel Clamp, 5/16" Long	(1)
24.	AN526C-832R8	Screw, #8 X 1/2" Long	(1)
25.	AN960-8	Flat Washer, #8	(4)
26.	MS20365-832A	Locknut, #8	(4)
27.	MS21919WDG-30	Adel Clamp, 1-7/8" Long	(1)
28.	SCAT-7	Duct, 1-3/4"	(24")

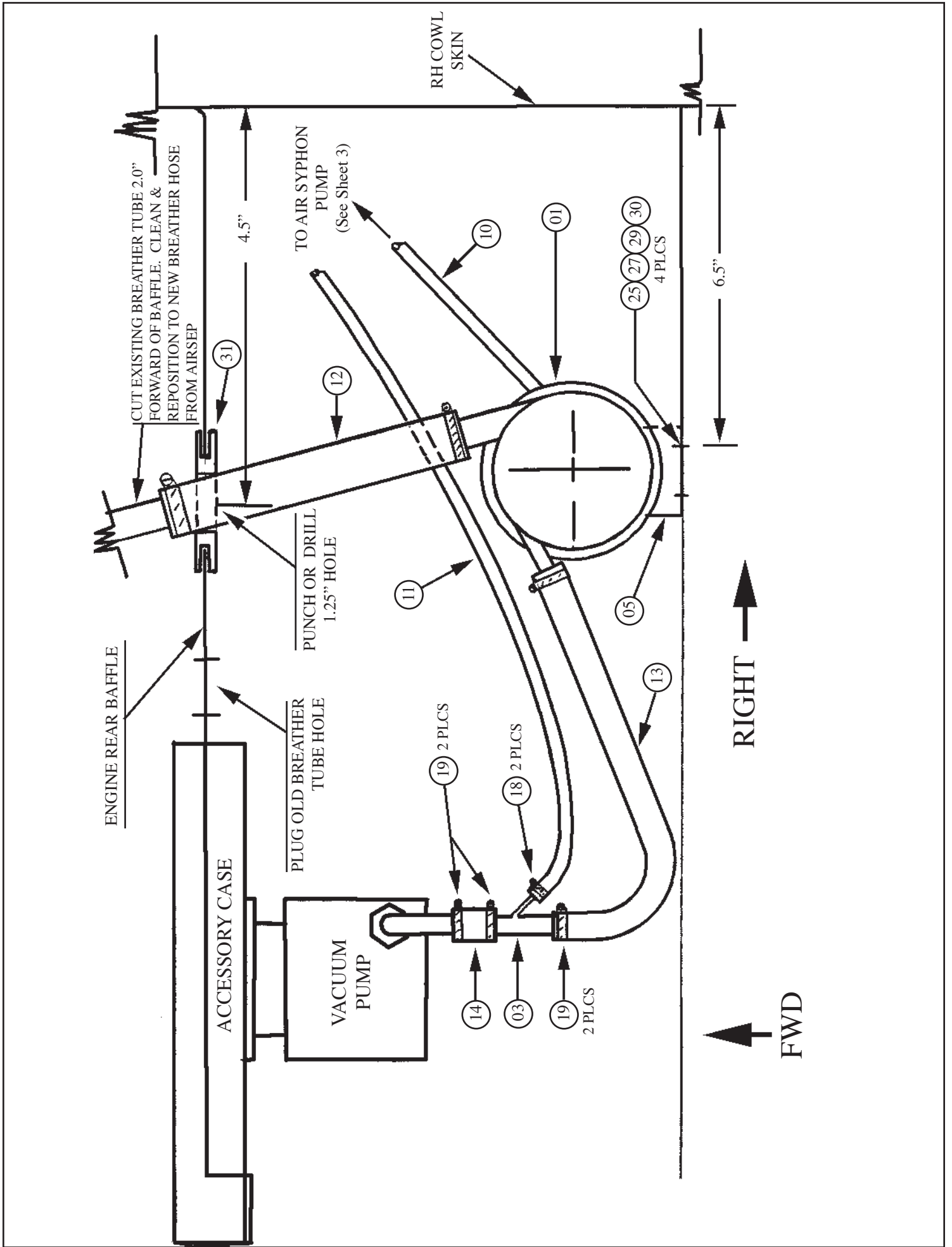
Applicability: CESSNA
336
337

Drawing: AFC-W330
Revision: B
Date: 06/01/05

*Note A: Some hoses or wires may have to be rerouted so the air/oil separator will fit into position.
Reference and material per AC 43.13-1B & 2A.*

WARNING: ALL HOSES SHALL BE LOCATED AT LEAST 4.0" FROM ANY HEAT SOURCE LIKELY TO CAUSE VAPORIZATION OF THE OIL.

01. Cut the existing 3/4" breather tube 2.0" forward of the engine's rear baffle and remove the section from the baffle down to the cowl flap.
02. Plug the old breather tube hole through the rear baffle.
03. Locate a position 4.5" up from the bend in the engine rear baffle and 4.5" from the right outer perimeter of the baffle. Drill a 1.25" hole at that point and install the grommet (Item 31) in the hole. See sheet 2 & 3.
04. Locate a position 6.5" in from the right side of the aircraft and 1.5" down from the lower row of rivets in the firewall hat section as shown on sheet 2 & 3.
05. Being careful not to drill any wires, tubes, etc., behind the firewall, drill a #11 hole at the located position and install one rivnut (Item 30).
06. Position the bracket (Item 5) on the firewall and secure it in place, square on the firewall using (1) ea. of Items 27, 29 and 25. [See sheet 2 & 3]
07. Locate the other 3 holes. Remove the bracket (Item 5), drill the other 3 holes and reinstall the bracket using the additional 3 ea. of the Items 27, 29, & 25. [See sheets 2 & 3]
08. Position the large clamp (Item 17) between the mounting bracket (Item 5) and the firewall. [See sheet 3]
09. Secure the AirSep (Item 1) to the universal bracket (Item 5) using the installed clamp (Item 17) and with the 3/4" inlet tube pointing forward towards the installed grommet (Item 31). [See sheet 3]
10. Install the hose (Item 12) between the 3/4" AirSep inlet and the cut off existing breather tube as shown on sheet 2 & 3. Clamp both ends using (1) each of the clamps (Item 20) on each end.
11. If the outlet tube on the vacuum pump is in the shape of a upside down "U", cut off the part of the tube before it turns downward, leaving enough of the tube running horizontally to secure a hose to it. Install the hose, (Item 14) over the cut off end of the existing tube. See sheet 2.
12. Install the Air-Tee (Item 3) in the other end of the hose (Item 14). Clamp both ends of the hose (Item 14) using one each of the clamps (Item 19) on each end. See sheet 2.
13. Install the hose (Item 13) one end over the remaining 1/2" port of the Air-Tee (Item 3) and the other over the 1/2" inlet port of the AirSep (Item 1). Clamp both ends using (1) each of the item 19 on each end. [See sheet 2]
14. Install the rocker cover modification kit on the #1 cyl. rocker cover in accordance with KW-2031. Use the new TCM P/N 65528 rocker cover gasket in the kit for re-installation of the rocker cover.
15. Install the Air SyphonPump (Item 2) on the modified rocker cover with the exposed ends of the tubes facing aft. [See sheet 3]
16. Brace the Air Siphon Pump on the valve cover, using the Items 6, 22, 23, 24, & 26 to secure it. [See sheet 3]
17. Install the hose (Item 10) one end over the AirSep drain fitting and the other end over the 1/4" inlet tube of the Air Syphon Pump, (Item 2). Clamp both ends using one each of the items 18 on each end. [See sheets 2 & 3]
18. Install the hose (Item 11) one end over the 5/16" port of the Air-Tee (Item 3) and the other end over the 5/16" inlet port of the Air Syphon Pump (Item 2). Clamp both ends using (1) ea. of Item 4 on each end. [See sheets 2 & 3]
19. Install the overboard duct (Item 33) on the 1-3/4" outlet port of the AirSep (Item 1). Clamp it in place using (1) ea. of the item 21. [See sheet 3]
20. Connect the lower end of the duct to the cowl flap cable block using the clamp (Item 32) and the existing AN-3 bolt securing the cowl flap cable block.
21. Determine weight & balance, initiate Form 337, and update the equipment list.



TOP EDGE OF
REAR ENGINE BAFFLE

