

FOR REFERENCE ONLY

Applicability: CESSNA
Hawk XP

Drawing: AFC-W328
Revision: B
Date: 06/01/05

Airwolf Parts List No. AFC-W328

<u>Index</u>	<u>Part Number</u>	<u>Description</u>	<u>Quantity</u>
01.	W-3014	AirSep Assy	(1)
02.	W-2008	Air Syphon Pump	(1)
03.	AN912-3D	Reducer Bushing	(5)
04.	AN816-5D	Fitting, Straight	(1)
05.	W-2018-1	Air-Tee	(1)
06.	W-2034-1	Breather Tube	(1)
07.	W-2011	Bracket	(1)
08.	W-2150	Doubler	(1)
09.	AN525-10R10	Screw	(5)
10.	AN960-10	Flat Washer, #10	(5)
11.	MS20365-1032A	Locknut, #10	(4)
12.	MIL6000-1/4	Hose, 1/4" ID	(14")
13.	MIL6000-5/16	Hose, 5/16" ID	(16")
14.	MIL6000-5/8	Hose, 5/8" ID	(16")
16.	MIL6000-3/4	Hose, 3/4" ID	(6")
17.	MM-4	Hose Clamp, 1/4"	(2)
18.	MM-5	Hose Clamp, 3/8"	(2)
19.	QS100M10H	Hose Clamp, 5/8"	(4)
20.	QS100M12H	Hose Clamp, 3/4"	(4)
21.	QS100M24H	Hose Clamp, 1-1/2"	(1)
22.	QS100M72H	Hose Clamp, 4-1/2"	(1)
23.	W-2100	"C" Channel	(10")
24.	MS21919WDG-30	Adel Clamp, 1-7/8" Long	(1)
25.	SCAT-7	Duct, 1-3/4"	(25")

*Note A: Some hoses or wires may have to be rerouted so the air/oil separator will fit into position.
Reference and material per AC 43.13-1B & 2A.*

WARNING: ALL HOSES SHALL BE LOCATED AT LEAST 4.0" FROM ANY HEAT SOURCE LIKELY TO CAUSE VAPORIZATION OF THE OIL.

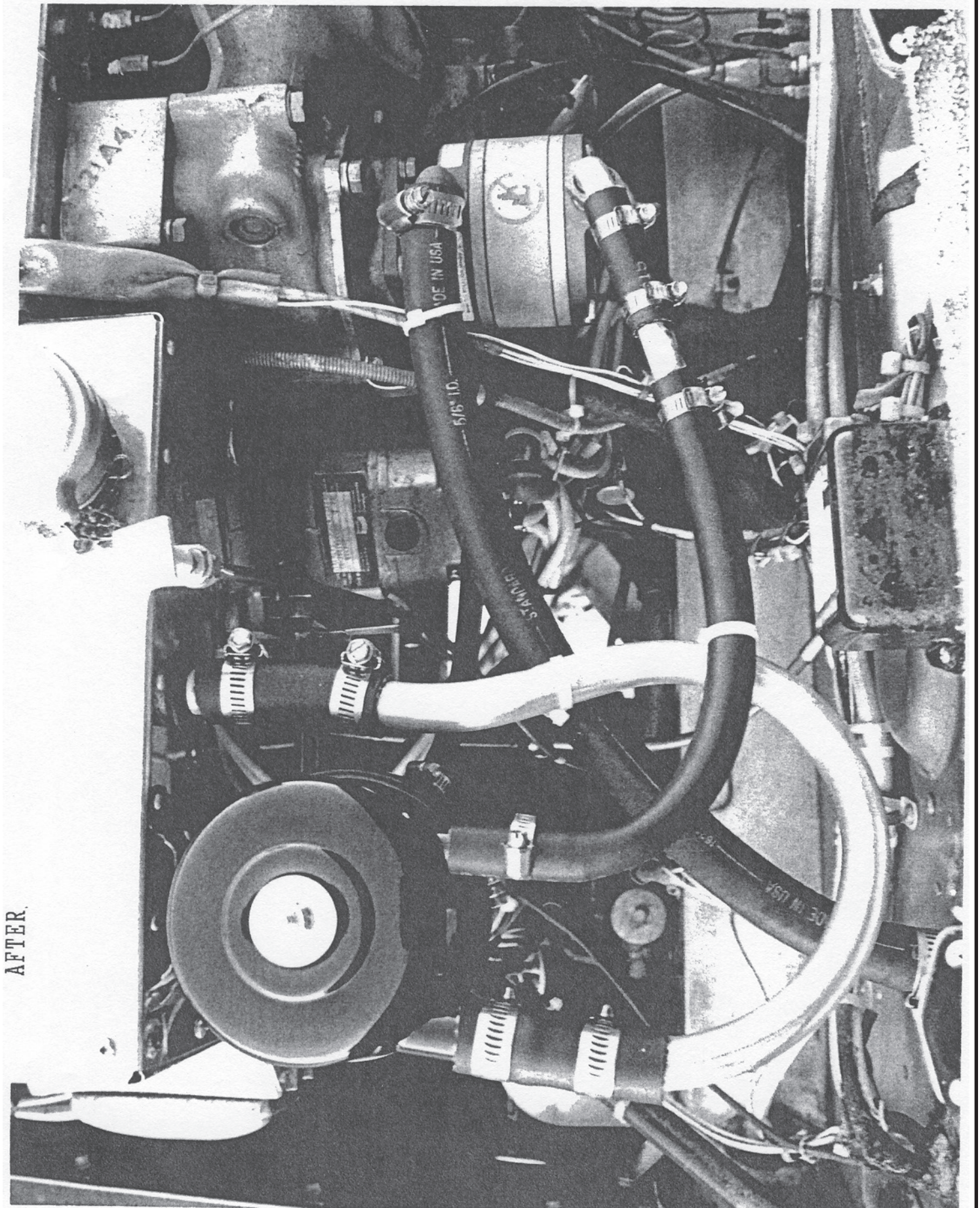
01. Remove existing breather tube hardware and extension to cowl flap.
02. Cut existing breather tube approximately 1-1/2" after it exits from rear engine baffle.
03. Mount W-2011 bracket on rear engine baffle with doubler as indicated in drawings.
04. Install AirSep on bracket with 3/4" and 1/2" outlets pointing towards firewall.
05. Remove oil return drain plug in engine accy case housing. Install AN912-3D reducer with AN816-5D fitting. Assemble W-2008 AirSyphon Pump to AN816-5D fitting.

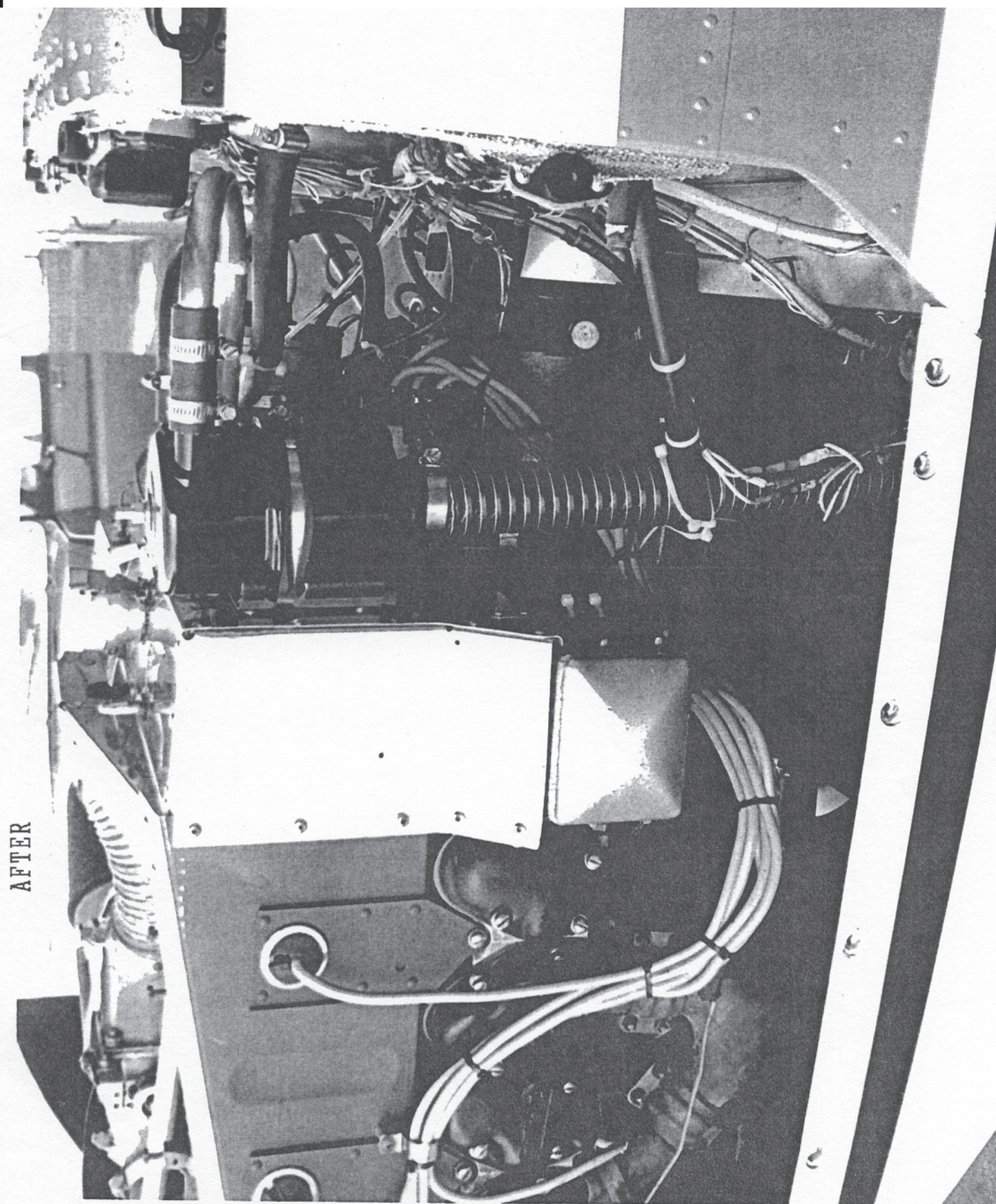
Note: 1/4" line on AirSyphon Pump must point up at slight angle

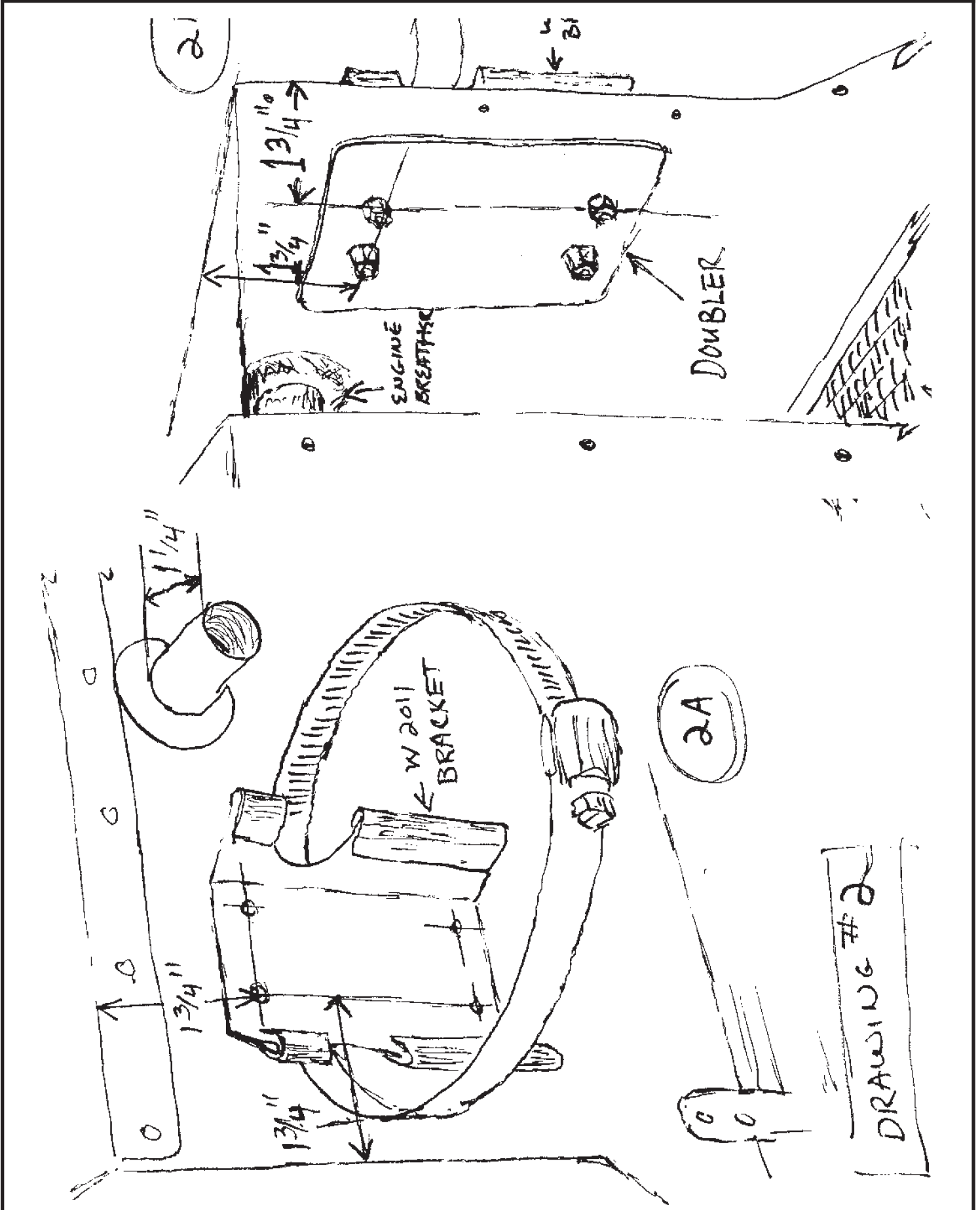
06. Install 1/4" hose from oil drain outlet on the bottom of the AirSep to the 1/4" inlet on the AirSyphon Pump.
07. Remove the pressure outlet elbow from the vacuum pump, cut off at the location shown, and reinstall to point discharge pipe to point towards the AirSep 1/2" line.
08. Assemble 1/2" hose to vacuum pump discharge outlet elbow. Install W-2018 Air-Tee with 5/16" outlet pointing in direction of airflow.
Install 1/2" hose from the Air-Tee to the 1/2" inlet on the AirSep making sure the 1/2" hose goes over the 3/4" vacuum inlet hose from the firewall.
09. Install 5/16" hose from the Air-Tee to the AirSyphon Pump.
10. Install 3/4" hose from the existing breather tube to the AirSep 3/4" inlet.
11. Attach 1-3/4" CAT-7 duct to the bottom of the AirSep. CAT-7 should not extend into the airstream below the engine cowling. Secure with MS21919WDG-30 clamp provided.
12. Check all connections, clamps, and attachments for tightness. Ty-Wrap as necessary.

Note: All Hose connections are clamped.

13. Determine weight & balance, initiate Form 337, and update the equipment list.







DRAWING # 3

