

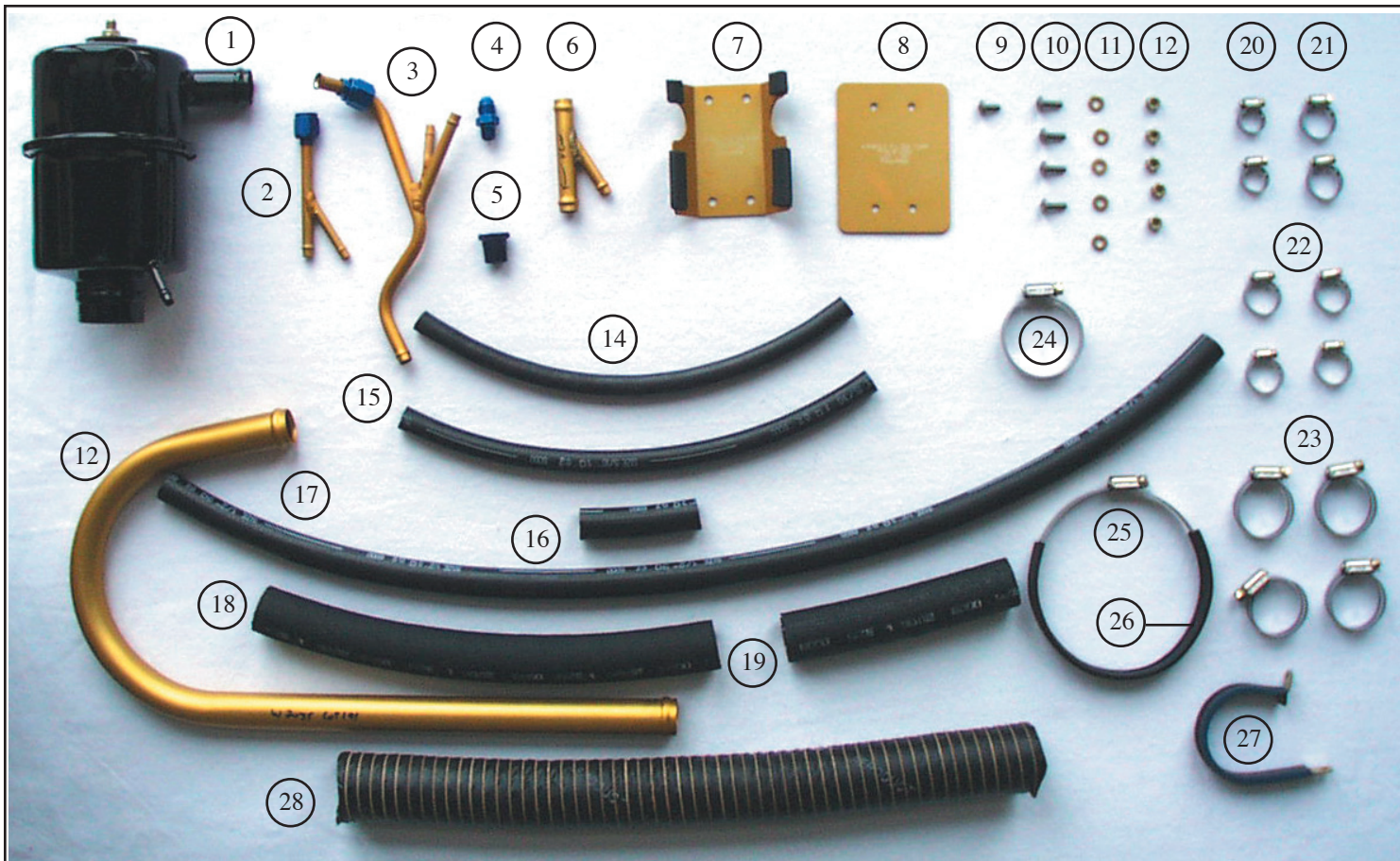
Applicability: CESSNA
Skylane RG
R182,

FOR REFERENCE ONLY

Drawing: AFC-W323
Revision: B
Date: 06/01/05

Airwolf Parts List No. AFC-W323

Index	Part Number	Description	Quantity
01.	W-3009	AirSep Assy	(1)
02.	W-2046	Air Syphon Pump	(1)
03.	W-2018-1	5/8" I.D. Air-Tee	(1)
04.	W-2011	Bracket	(1)
05.	W-2150	Doubler	(1)
06.	AN52510R10	Screw, #10 X 5/8" Long	(5)
07.	AN960-10	Flat Washer, #10	(5)
08.	MS20365-1032A	Locknut, #10	(5)
09.	MS35338-43	Lock Washer, #10	(4)
10.	AN960-10	Flat Washer, #10	(4)
11.	A10K-80	Rivnut, #10-32 X 7/16"	(4)
12.	MIL6000-1/4	Hose, 1/4" ID	(20")
13.	MIL6000-5/16	Hose, 5/16" ID	(24")
14.	MIL6000-5/8	Hose, 5/8" ID	(18")
15.	MIL6000-1	Hose, 1" ID	(7")
16.	MM-4	Hose Clamp, 1/4"	(2)
17.	MM-5	Hose Clamp, 5/16"	(2)
18.	QS100M10H	Hose Clamp, 5/8"	(4)
19.	QS100M16H	Hose Clamp, 1"	(2)
20.	QS100M24H	Hose Clamp, 1-1/2"	(1)
21.	QS100M72H	Hose Clamp, 4-1/2"	(1)
22.	W-2100	"C" Channel	(10")
23.	MS21919WDG-30	Adel Clamp, 1-7/8"	(1)
24.	SCAT-7	Duct, 1-3/4" ID	(35")



Applicability: CESSNA
182R,S, T with
LYC IO540 Engines

FOR REFERENCE ONLY

Drawing: AFC-W323
Revision: B
Date: 06/01/05

Airwolf Parts List No. AFC-W323-B

Index	Part Number	Description	Quantity
01.	W-3003	AirSep Assy, 3/4" Breather, 5/8" Vacuum	(1)
02.	W-2008	Air Syphon Pump	(1)
03.	AN816-5D	Straight Fitting [Use with W-2008 Pump]	(1)
04.	AN912-3D	Reducer Bushing [Use with W-2008 Pump]	(1)
05.	W-2018-1	Air-Tee	(1)
06.	W-2011	Bracket	(1)
07.	W-2150	Doubler	(1)
08.	AN525-10R8	Screw, #10 X 1/2" Long	(1)
09.	AN525-10R10	Screw, #10 X 5/8" Long	(4)
10.	AN960-10	Flat Washer, #10	(5)
11.	MS20365-1032A	Locknut, #10	(5)
12.	MIL6000-1/4	Hose, 1/4" ID	(12")
13.	MIL6000-5/16	Hose, 5/16" ID	(13")
14.	MIL6000-5/8	Hose, 5/8" ID	(18")
15.	MIL6000-3/4	Hose, 3/4" ID	(18")
16.	MM-4	Hose Clamp, 1/4"	(2)
17.	MM-5	Hose Clamp, 5/16"	(2)
18.	QS100M12H	Hose Clamp, 3/4"	(4)
19.	QS100M16H	Hose Clamp, 1"	(4)
20.	QS100M24H	Hose Clamp, 1-1/2"	(1)
21.	QS100M72H	Hose Clamp, 4-1/2"	(1)
22.	W-2100	"C" Channel	(10")
23.	MS21919WDG-30	Adel Clamp, 1-7/8" Long	(1)
24.	SCAT-7	Duct, 1-3/4"	(18")

Applicability:

CESSNA
T182T

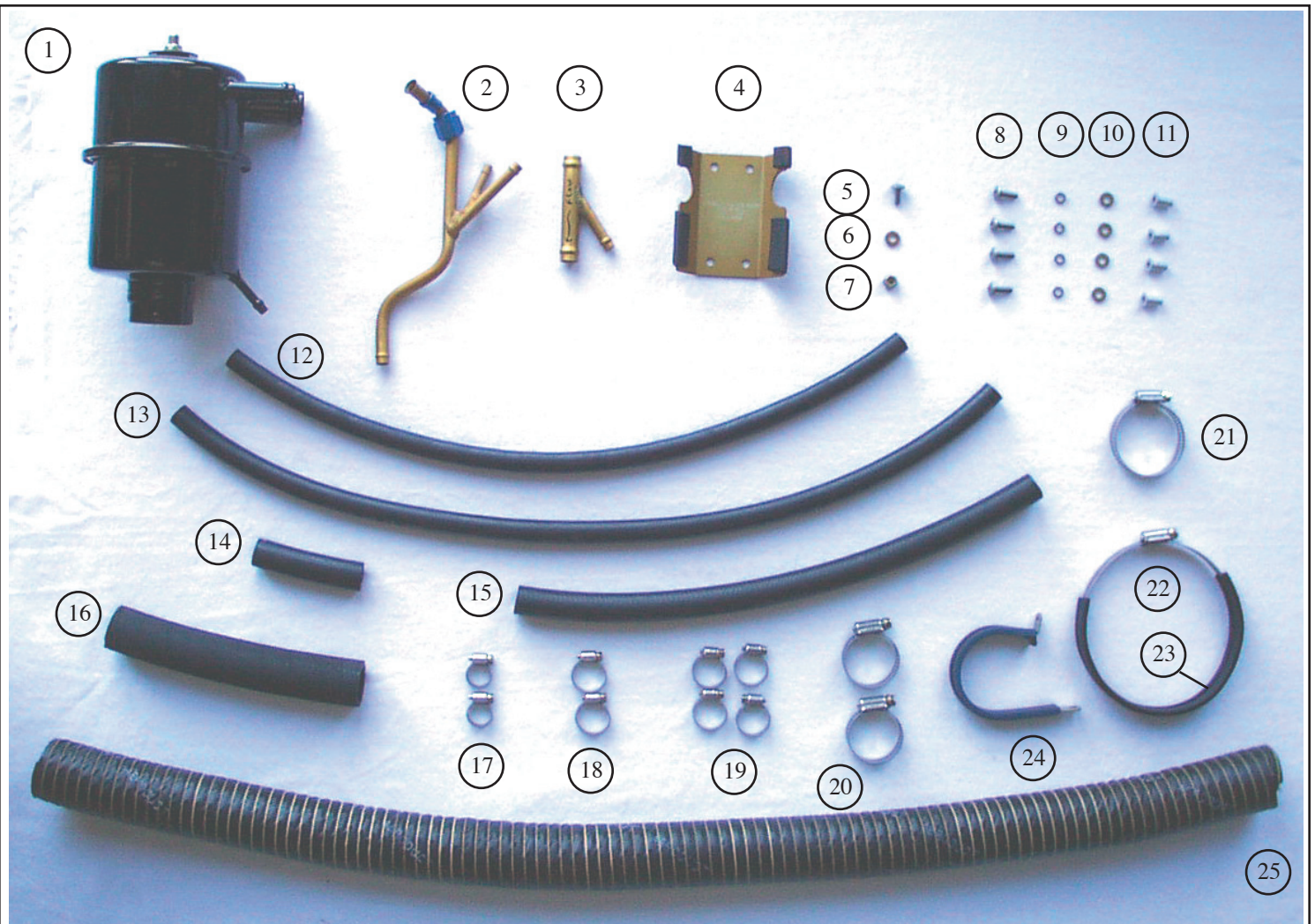
Drawing: AFC-W323

Revision: A

Date: 12/01/04

Airwolf Parts List No. AFC-W323-C

<u>Index</u>	<u>Part Number</u>	<u>Description</u>	<u>Quantity</u>
01.	W-3026-B	AirSep Assy, 3/4" Breather, 1/2" Vacuum, 3/8" Drain	(1)
02.	W-2011	Bracket	(1)
03.	W-2150	Doubler	(1)
04.	AN526C1032R10	Screw	(5)
05.	AN960-10	Washer, #10	(5)
06.	MS20365-1032A	Locknut	(5)
07.	MIL6000-3/8	Hose, 3/8" ID	(24")
08.	MIL6000-5/8	Hose, 5/8" ID	(24")
09.	MIL6000-3/4	Hose, 3/4" ID	(24")
10.	W-2100	"C" Channel	(5")
11.	MM-5	Hose Clamp, 3/8"	(2)
12.	QS100M10H	Hose Clamp, 5/8"	(2)
13.	QS100M12H	Hose Clamp, 3/4"	(2)
14.	QS100M24H	Hose Clamp, 1-1/2"	(1)
15.	QS100M72H	Hose Clamp, 4-1/2"	(1)
16.	MS21919WDG-30	Adel Clamp, 1-3/4" Long	(1)
17.	CAT-7	Duct, 1-3/4"	(24")



Applicability: CESSNA
Skylane TurboRG
TR182

FOR REFERENCE ONLY

Drawing: AFC-W323
Revision: B
Date: 06/01/05

Airwolf Parts List No. AFC-W323-D

<u>Index</u>	<u>Part Number</u>	<u>Description</u>	<u>Quantity</u>
01.	W-3009	AirSep Assy	(1)
02.	W-2046-3	Air Syphon Pump	(1)
03.	W-2018-1	5/8" I.D. Air-Tee	(1)
04.	W-2011	Bracket	(1)
05.	W-2150	Doubler	(1)
06.	AN52510R10	Screw, #10 X 5/8" Long	(5)
07.	AN960-10	Flat Washer, #10	(5)
08.	MS20365-1032A	Locknut, #10	(5)
09.	MS35338-43	Lock Washer, #10	(4)
10.	AN960-10	Flat Washer, #10	(4)
11.	A10K-80	Rivnut, #10-32 X 7/16"	(4)
12.	MIL6000-1/4	Hose, 1/4" ID	(20")
13.	MIL6000-5/16	Hose, 5/16" ID	(24")
14.	MIL6000-5/8	Hose, 5/8" ID	(18")
15.	MIL6000-1	Hose, 1" ID	(7")
16.	MM-4	Hose Clamp, 1/4"	(2)
17.	MM-5	Hose Clamp, 5/16"	(2)
18.	QS100M10H	Hose Clamp, 5/8"	(4)
19.	QS100M16H	Hose Clamp, 1"	(2)
20.	QS100M24H	Hose Clamp, 1-1/2"	(1)
21.	QS100M72H	Hose Clamp, 4-1/2"	(1)
22.	W-2100	"C" Channel	(10")
23.	MS21919WDG-30	Adel Clamp, 1-7/8"	(1)
24.	SCAT-7	Duct, 1-3/4" ID	(35")

*Note A: Some hoses or wires may have to be rerouted so the air/oil separator will fit into position.
Reference and material per AC 43.13-1B & 2A.*

WARNING: ALL HOSES SHALL BE LOCATED AT LEAST 4.0" FROM ANY HEAT SOURCE LIKELY TO CAUSE VAPORIZATION OF THE OIL.

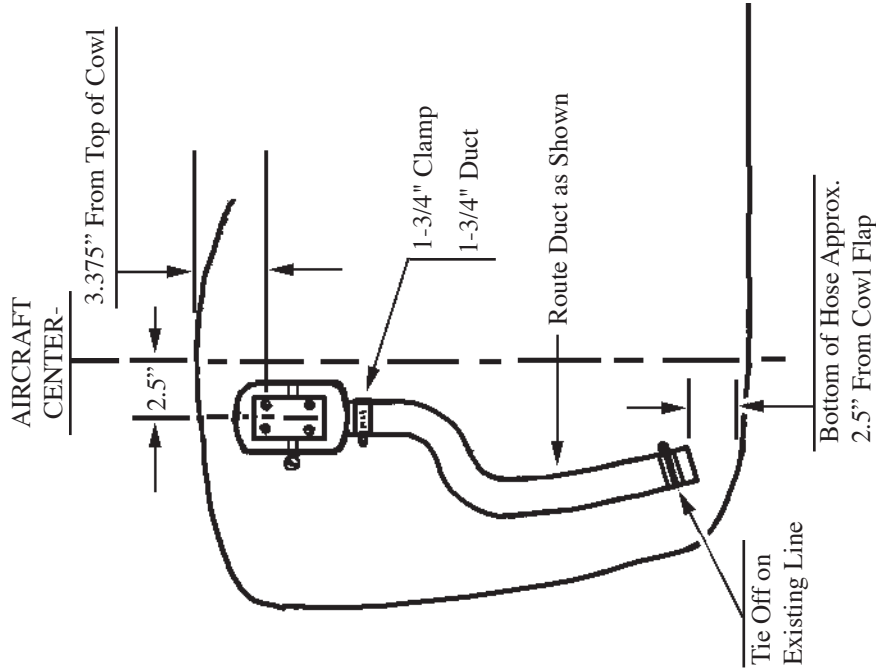
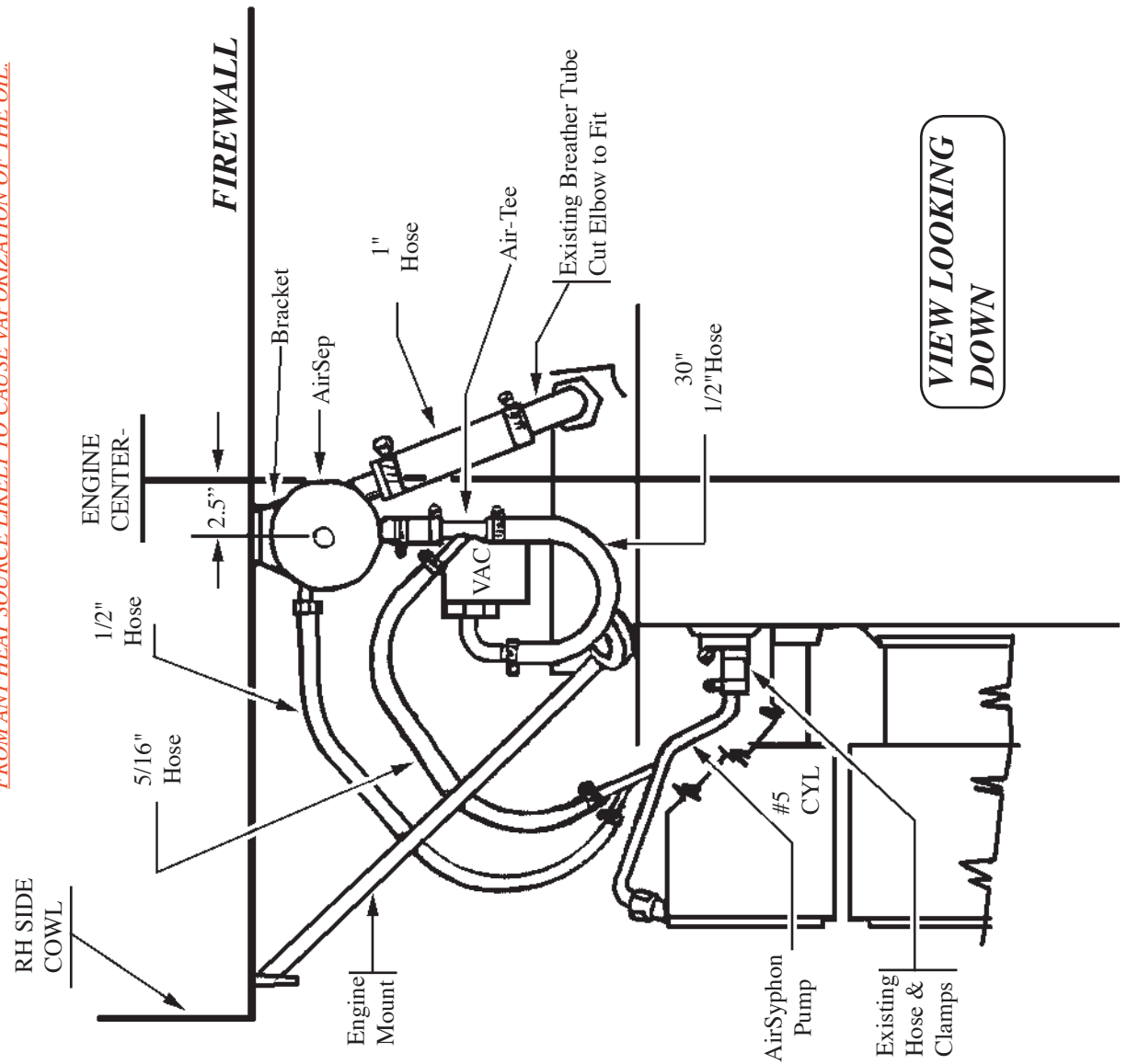
01. Remove the existing breather tube assy. from the engine outlet to the cowl flap area.
02. Locate W-2011 bracket as shown. Use bracket as template to drill holes.
03. Install W-2011 Bracket and secure with #10 screws, washer, lockwashers and rivnuts provided.
04. Secure the AirSep unit to the W-2011 bracket with the 1" inlet of the AirSep facing toward the engine breather outlet
Tighten the the 4-1/2" clamp.
05. On TR182 models that have the 1" bent alum tube on the engine breather outlet, cut the tube off, so that when the orange flex breather duct is installed between it and the AirSep unit, there will be no low spots. On TR & R182's install the orange duct on the breather outlet and the AirSep inlet. Secure both ends with 1" clamps.
06. Bend the 90° elbow on the outlet of the vacuum pump out approx. 5.0", so that when the 1/2" hose and Air-Tee are installed on the fitting they will clear the vacuum line by a minimum of 1/8".
07. Install the 1/2" hose and Air-Tee as shown and secure using 1/2" clamps.
08. Install the 1/2" hose between the Air-Tee and the top of the AirSep unit. Secure both ends using 1/2" clamps.
09. Remove the #5 rocker box drain line and re-install the new combination drain line and
AirSyphon Pump as shown.
10. Install the 5/16" hose between the 5/16" branch of the Air-Tee and the 5/16" branch on the Air Siphon Pump.
Secure both ends using 5/16" clamps.
11. Install the AirSep drain line between the 1/4" drain on the AirSep and the 1/4" branch of the AirSyphon Pump.
Secure both ends using 1/4" clamps.
12. Install the 1-3/4" duct onto the bottom of the AirSep unit and secure with a 1-1/2" clamp
13. Secure bottom of 1-3/4" duct with a -30 Adel clamp, and a #10 screw, washer and locknut.
14. Determine weight & balance, initiate Form 337, and update the equipment list.

Applicability:

CESSNA
Skylane RG
R182, TR182

Drawing: AFC-W323
Revision: B
Date: 06/01/05

WARNING: ALL HOSES SHALL BE LOCATED AT LEAST 4.0" FROM ANY HEAT SOURCE LIKELY TO CAUSE VAPORIZATION OF THE OIL.



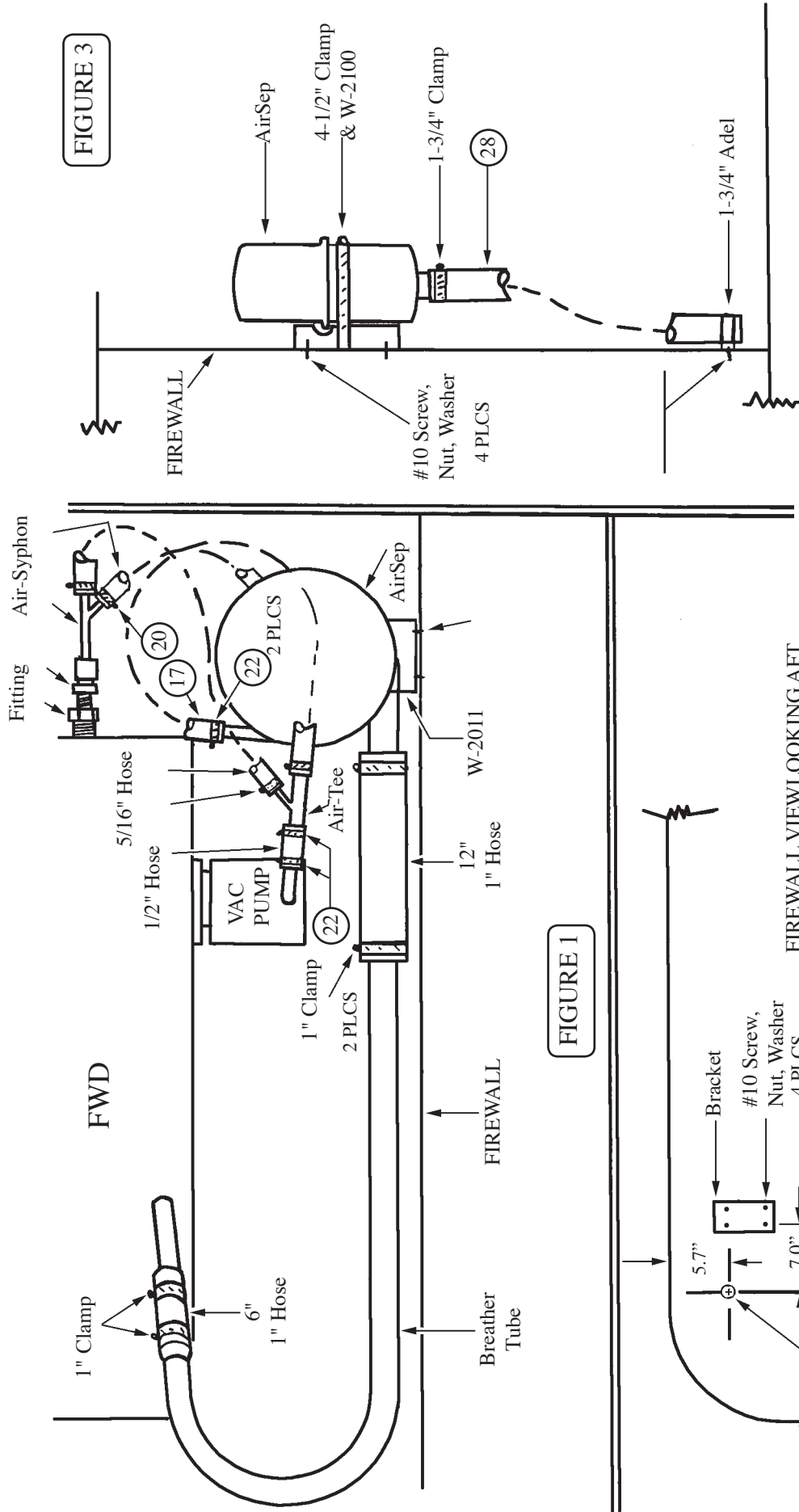


FIGURE 1

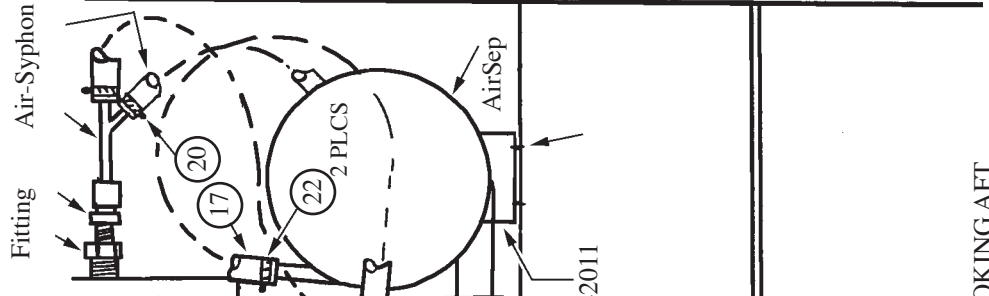


FIGURE 2

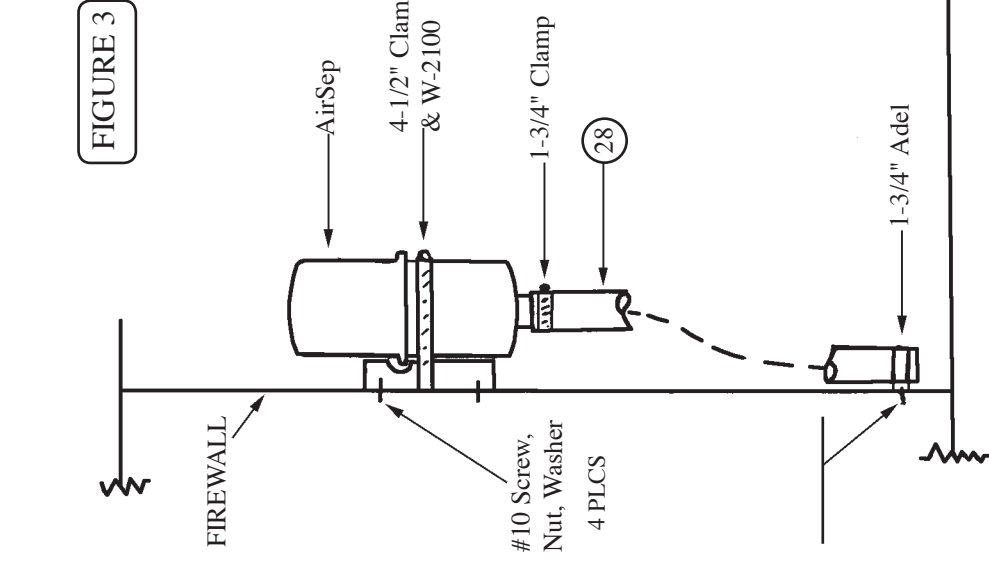
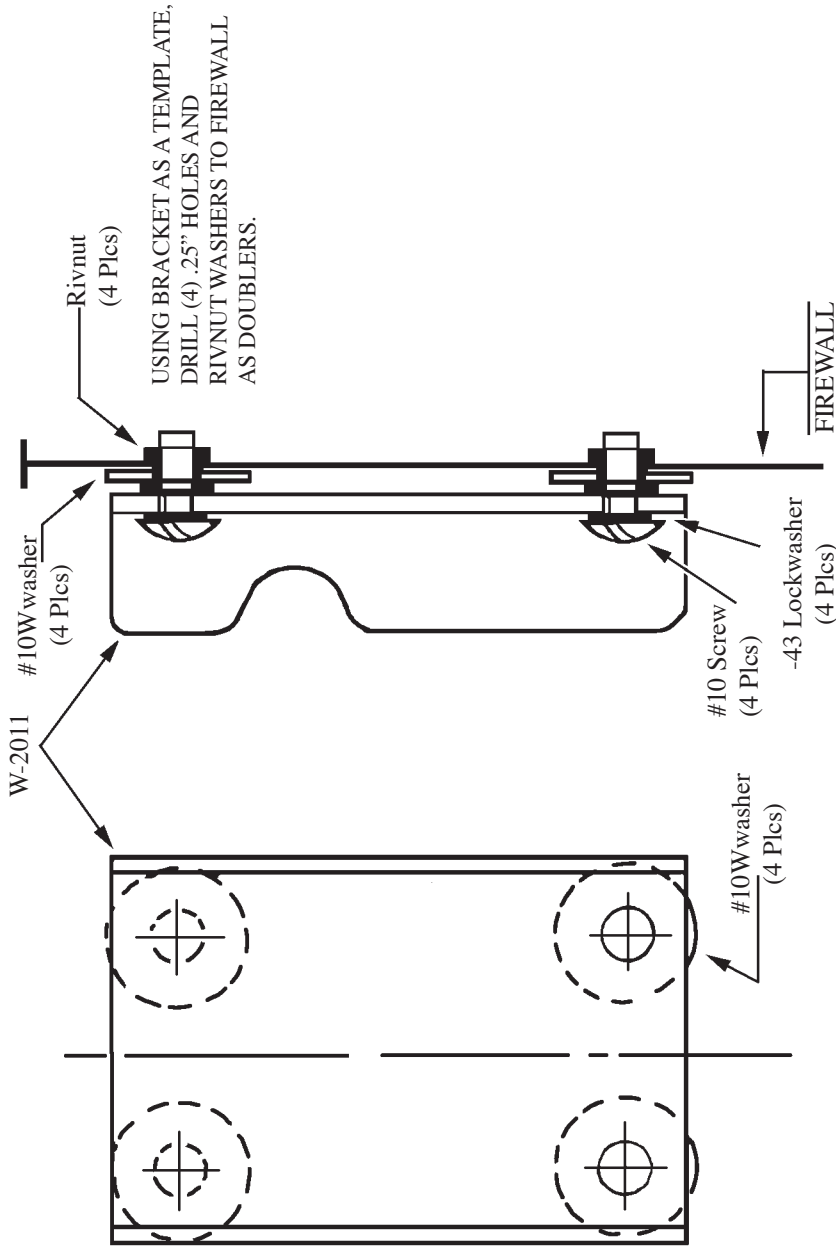


FIGURE 3

NOTE:
AirSep can be relocated as necessary to avoid conflict with other parts or accessories.

WARNING: ALL HOSES SHALL BE LOCATED AT LEAST 4.0" FROM ANY HEAT SOURCE LIKELY TO CAUSE VAPORIZATION OF THE OIL.



LOCATE BRACKET ON FIREWALL
AS SHOWN ON SHEET #2